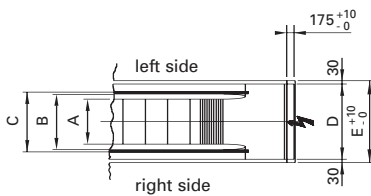
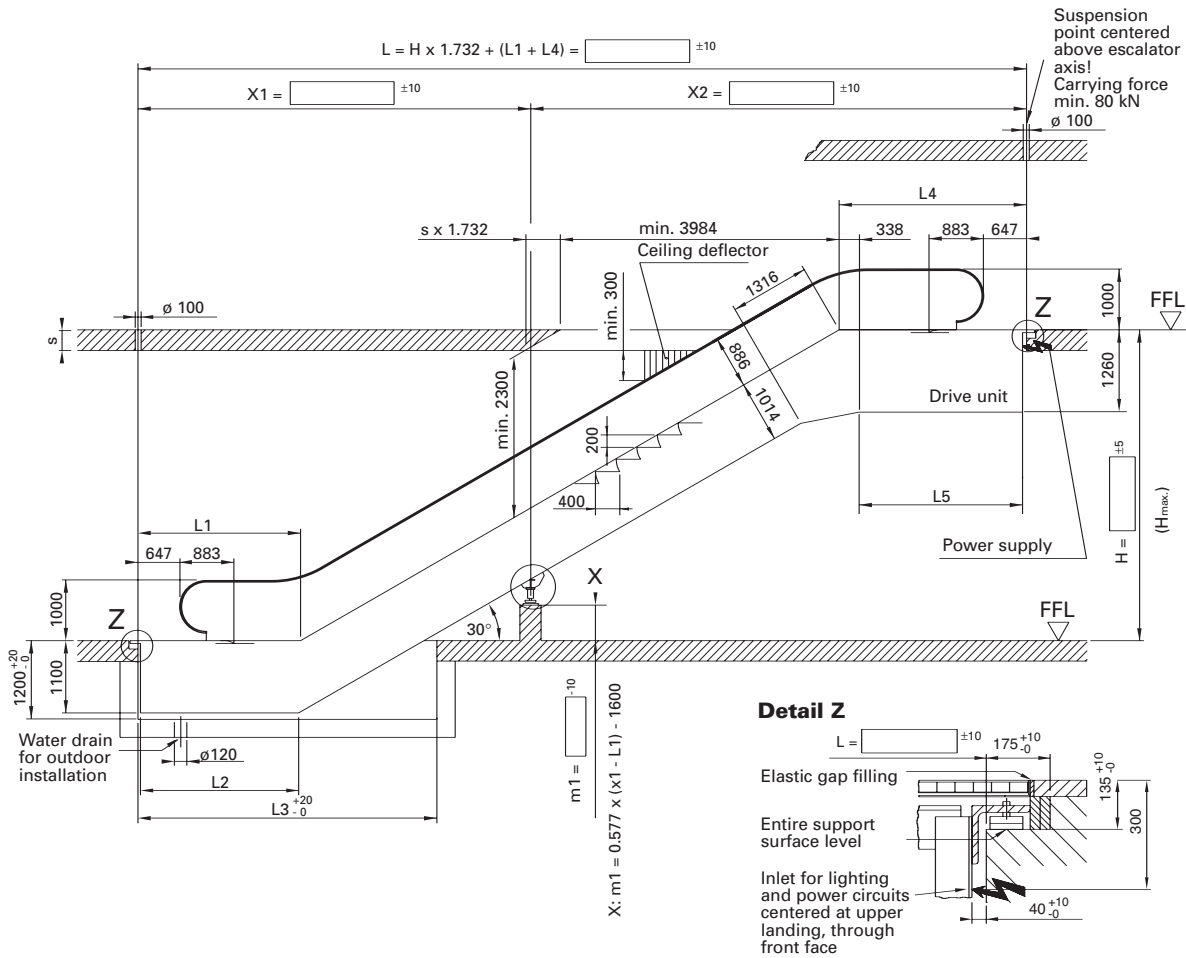


# SCHINDLER 9700AE®

**Type 2S**  
30° / K, M, L

**Balustrade:** design I/P  
**Balustrade height:** 1000 mm  
**Truss:** standard

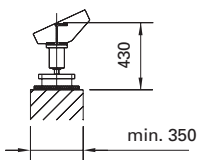
**Inclination:** 30°  
**Step width:** 800/1000 mm  
**Step run:** 2, 3, 4 horizontal steps



Step run	K	M	L
L1	2239	2639	3039
L2	2322	2722	3122
L3	4600	5000	5400
L4	2619	3019	3419
L5	2241	2641	3041

The specified dimensions are minimum dimensions; according to the configuration, larger dimensions might apply. (Example: L4, L5: + 90 mm for sweep step)

**Detail X**  
(1 intermediate support)



Step width	Size: S	
<b>A:</b> Step width	800	1000
<b>B:</b> Width between handrails	1060	1260
<b>C:</b> Handrail center distance	1140	1340
<b>D:</b> Width of escalator	1440	1640
<b>E:</b> Width of pit	1500	1700
<b>L<sub>max</sub>:</b> without intermediate supports	18100	16800
<b>X<sub>1,2 max</sub>:</b> with intermediate supports	15000	14000

Please contact Schindler for support loads, motor ratings, transportation dimensions, and weights. Please contact Schindler for dimensions relating to truss extensions, double drives, frequency converters, and lighting installations. Basic design according to EN 115 with 1.5-mm sheet-steel cladding. Please contact Schindler for other specifications. Please request detailed drawings Z, X and Y for expansion joints, seismic specifications and wind loads respectively from Schindler. Please contact the supplying factory (LW) for availability and delivery dates.

Speed  
 $v = 0.5 - 0.65 \text{ m/s}$

Nominal rise according to EN 115 with  
 $A = 1000 \text{ mm}$

Size S: max. 13 m

All dimensions in mm. Observe national regulations! Subject to changes.

**Schindler**

