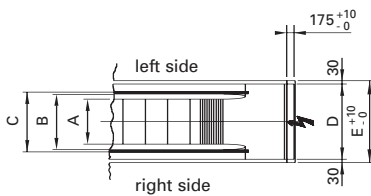
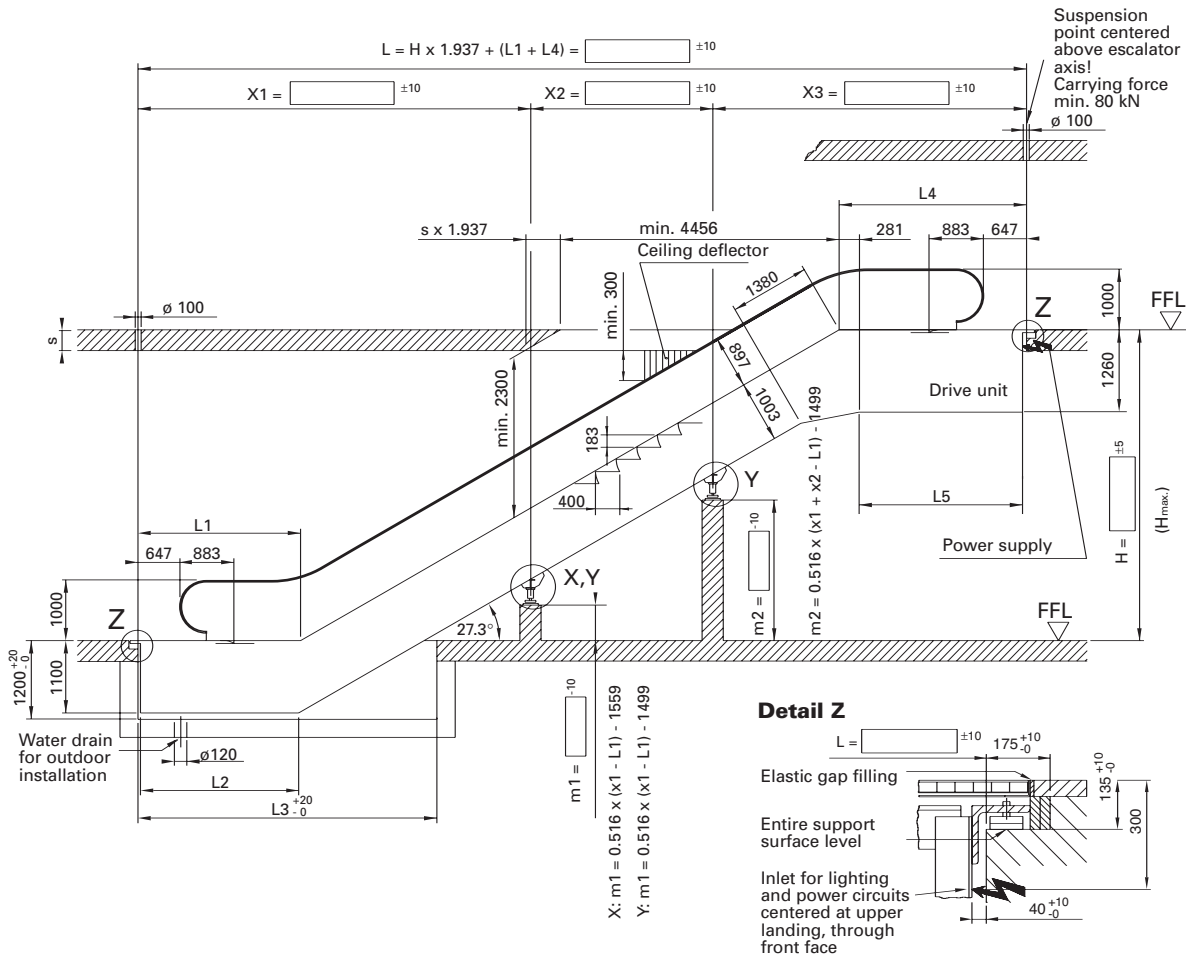


SCHINDLER 9700AE®

Type 2S
27.3°/K, M, L

Balustrade: design I/P
Balustrade height: 1000 mm
Truss: standard

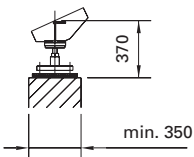
Inclination: 27.3°
Step width: 800/1000 mm
Step run: 2, 3, 4 horizontal steps



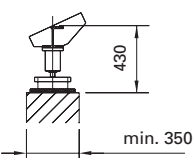
Step run	K	M	L
L1	2223	2623	3023
L2	2237	2637	3037
L3	4550	4950	5350
L4	2572	2972	3372
L5	2251	2651	3051

The specified dimensions are minimum dimensions; according to the configuration, larger dimensions might apply. (Example: L4, L5: + 90 mm for sweep step)

Detail Y
(from 2 intermediate supports upward)



Detail X
(1 intermediate support)



Step width	Size: S	
A: Step width	800	1000
B: Width between handrails	1060	1260
C: Handrail center distance	1140	1340
D: Width of escalator	1440	1640
E: Width of pit	1500	1700
L _{max} : without intermediate supports	18100	16800
X _{1,2,3 max.} : with intermediate supports	15000	14000

Please contact Schindler for support loads, motor ratings, transportation dimensions, and weights. Please contact Schindler for dimensions relating to truss extensions, double drives, frequency converters, and lighting installations. Basic design according to EN 115 with 1.5-mm sheet-steel cladding. Please contact Schindler for other specifications. Please request detailed drawings Z, X and Y for expansion joints, seismic specifications and wind loads respectively from Schindler. Please contact the supplying factory (LW) for availability and delivery dates.

Speed
 $v = 0.5-0.65$ m/s

Nominal rise according to EN 115 with
 $A = 1000$ mm

Size S: max. 13 m

All dimensions in mm. Observe national regulations! Subject to changes.

Schindler

