

# Schindler 9300 Advanced Edition

## Type 30 • 30°-M

**Rise:** max. 13 m at a step width of 1000 mm  
**Balustrade:** design E/F  
**Balustrade height:** 900/1000 mm

**Inclination:** 30°  
**Step width:** 800/1000 mm  
**Step run:** 3 horizontal steps

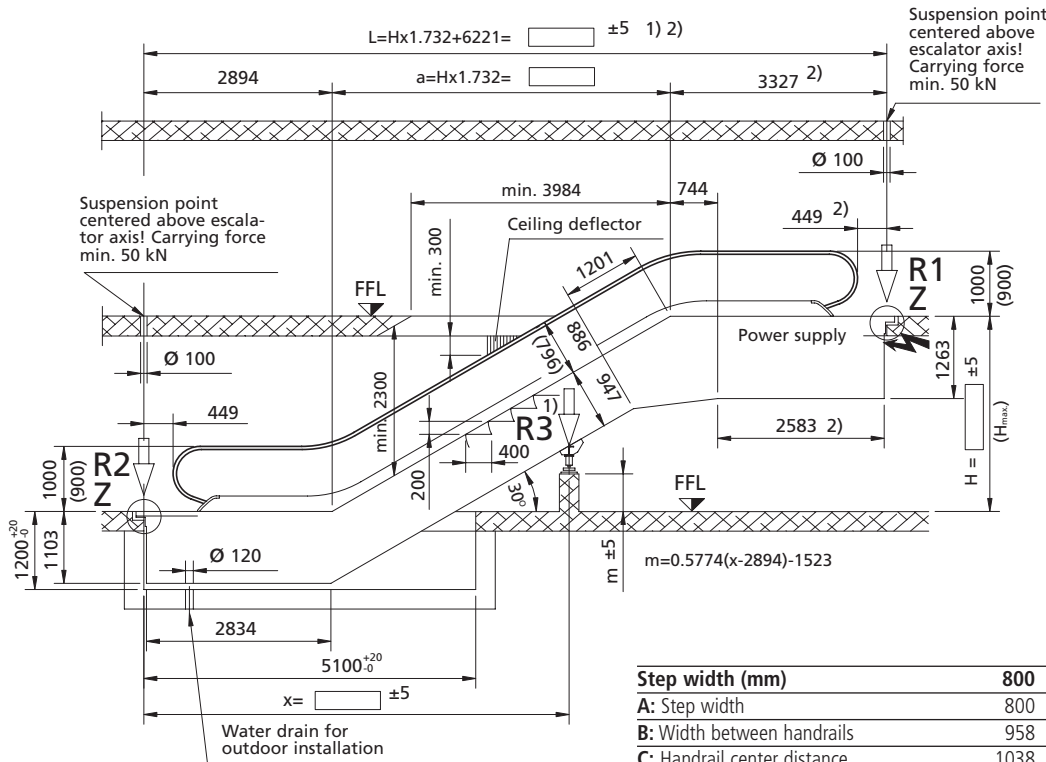
All dimensions in mm.  
 Observe national regulations!  
 Subject to changes.

1) If  $L > L_{max.}$ , an intermediate support may be required. Please consult Schindler.

2) With a double drive, the truss must be extended by 417 mm.

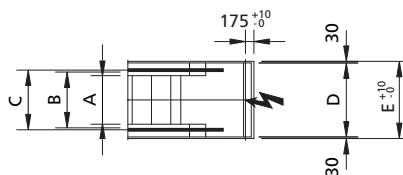
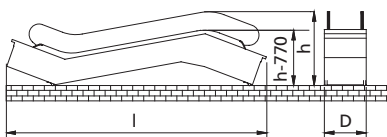
3) With a balustrade height of 900 mm,  $h$  is reduced by 70 mm.

4) Delivery in min. 2 parts.



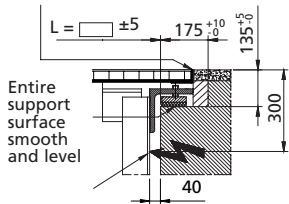
Step width (mm)	800	1000
A: Step width	800	1000
B: Width between handrails	958	1158
C: Handrail center distance	1038	1238
D: Width of escalator	1340	1540
E: Width of pit	1400	1600
$L_{max.}^1$ : Limiting span length	17100	15700
$H_{max.}$ : Maximum rise	13000	13000

### Transportation dimensions



### Detail Z

Gaps at joints to be filled with joint filler (by customer)



Inlet for lighting and power circuits centered at upper end, through front face

Step width A mm	Rise H mm	Weight kN	Support loads			Transp. dimensions	
			R1 kN	R2 kN	R3 kN	Balustrade height 1000 $h^3$	l
800	5000	89	79	70	-	3350	16220
	5500	93	83	73	-	3380	17220
	6000	97	87	77	-	3400	18210
	6500	97	46	37	83	3410	19200
	7000	100	47	38	88	4)	4)
	7500	104	48	39	93	4)	4)
	8000	108	50	40	98	4)	4)
	8500	111	51	42	103	4)	4)
	9000	115	52	43	108	4)	4)
	9500	119	53	44	113	4)	4)
10000	122	54	45	117	4)	4)	
1000	5000	94	89	79	-	3350	16220
	5500	95	48	39	86	3380	17220
	6000	99	50	41	92	3400	18210
	6500	103	51	42	97	3410	19200
	7000	107	52	43	103	4)	4)
	7500	110	53	44	109	4)	4)
	8000	114	55	46	114	4)	4)
	8500	118	56	47	120	4)	4)
	9000	122	57	48	126	4)	4)
	9500	126	59	50	131	4)	4)
10000	130	60	51	137	4)	4)	



**Schindler**